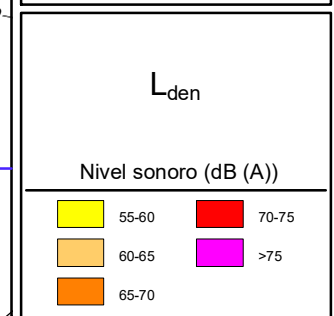
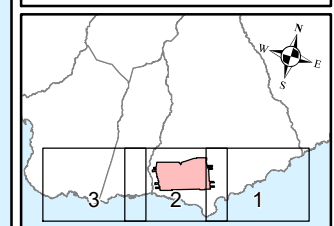


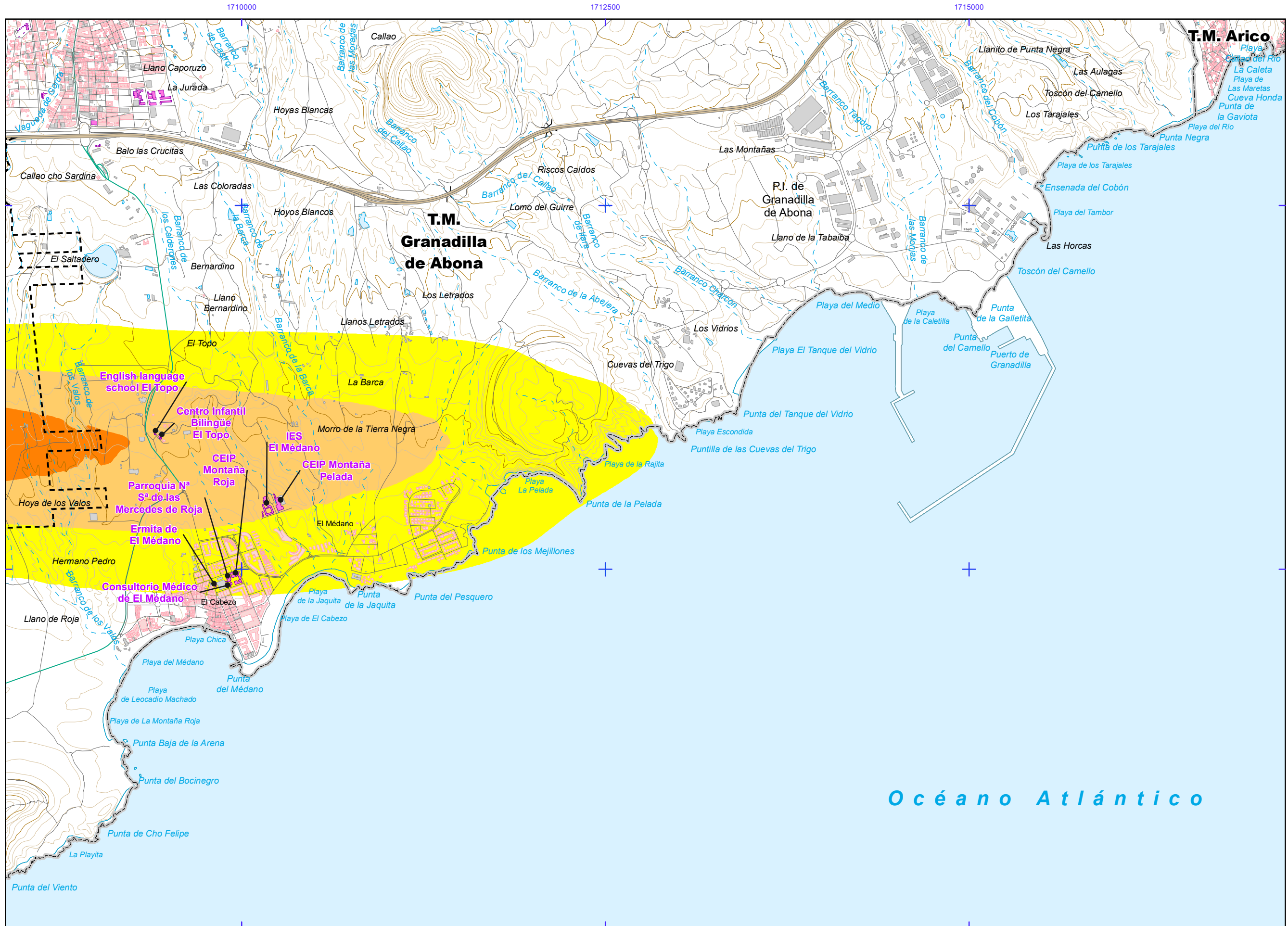
AEROPUERTO DE TENERIFE-SUR



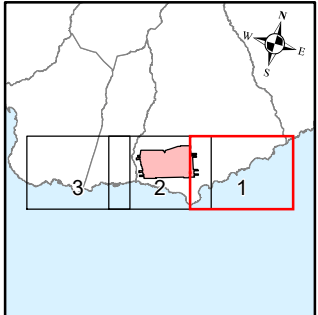
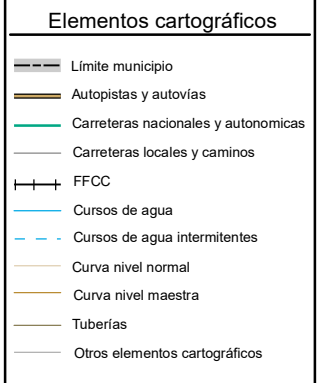
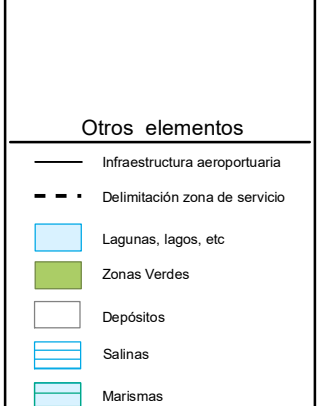
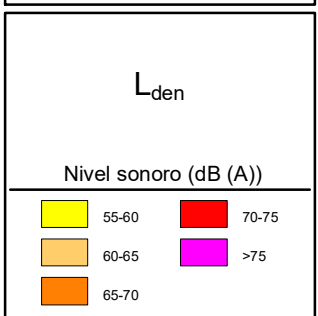
- Otros elementos**
- Infraestructura aeroportuaria
 - - - Delimitación zona de servicio

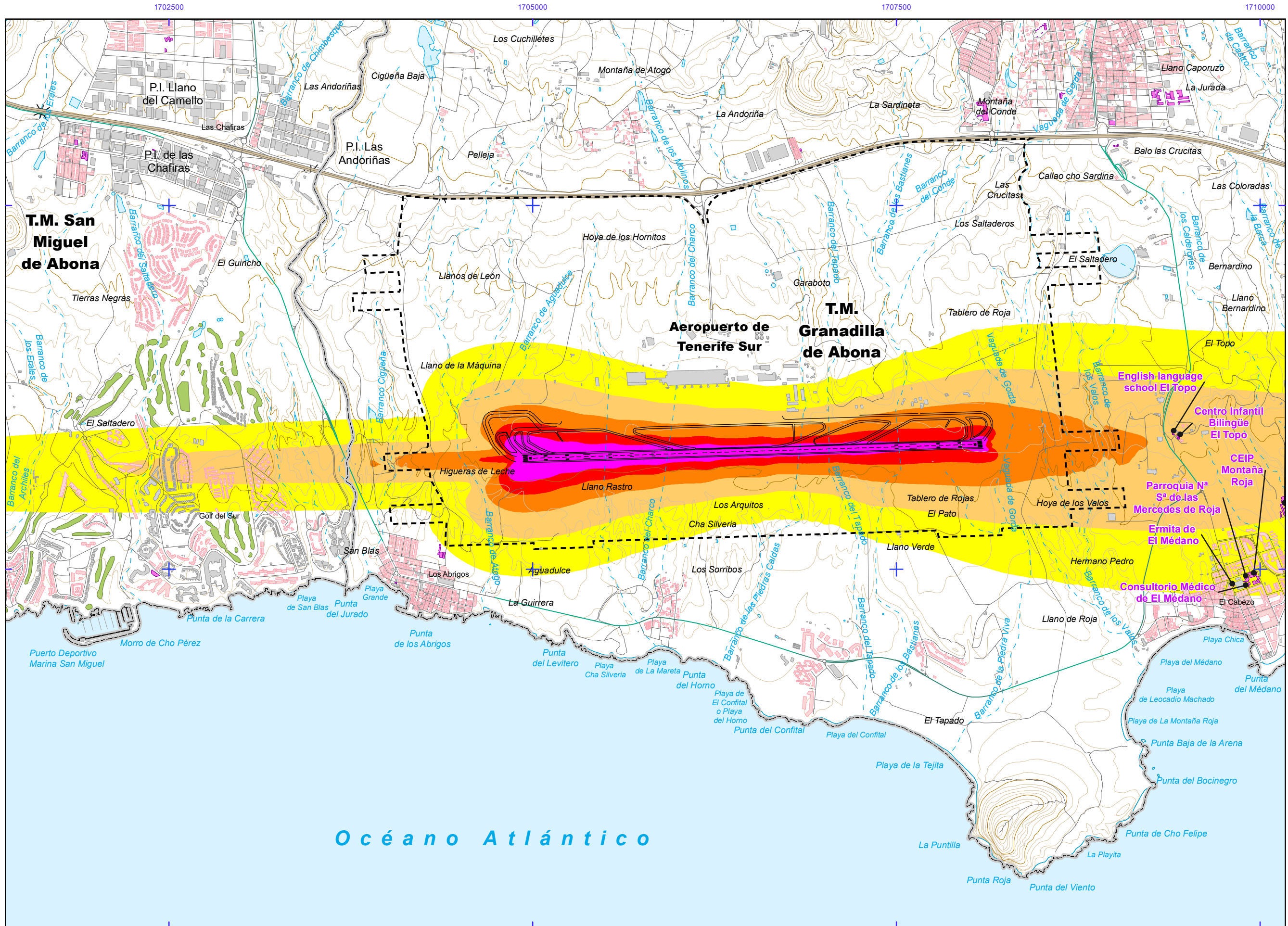
- Elementos cartográficos**
- - - Limite municipio





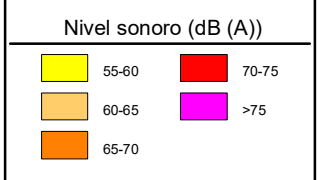
AEROPUERTO DE TENERIFE-SUR



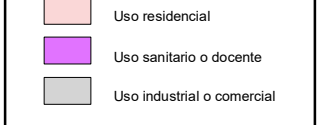


AEROPUERTO DE TENERIFE-SUR

L_{den}



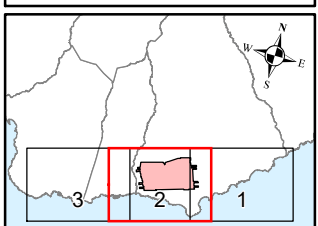
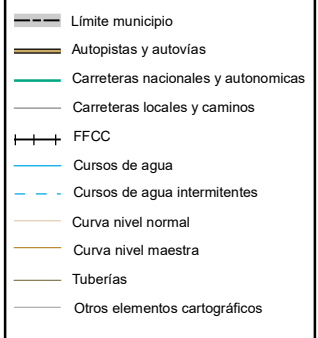
Tipos de edificio

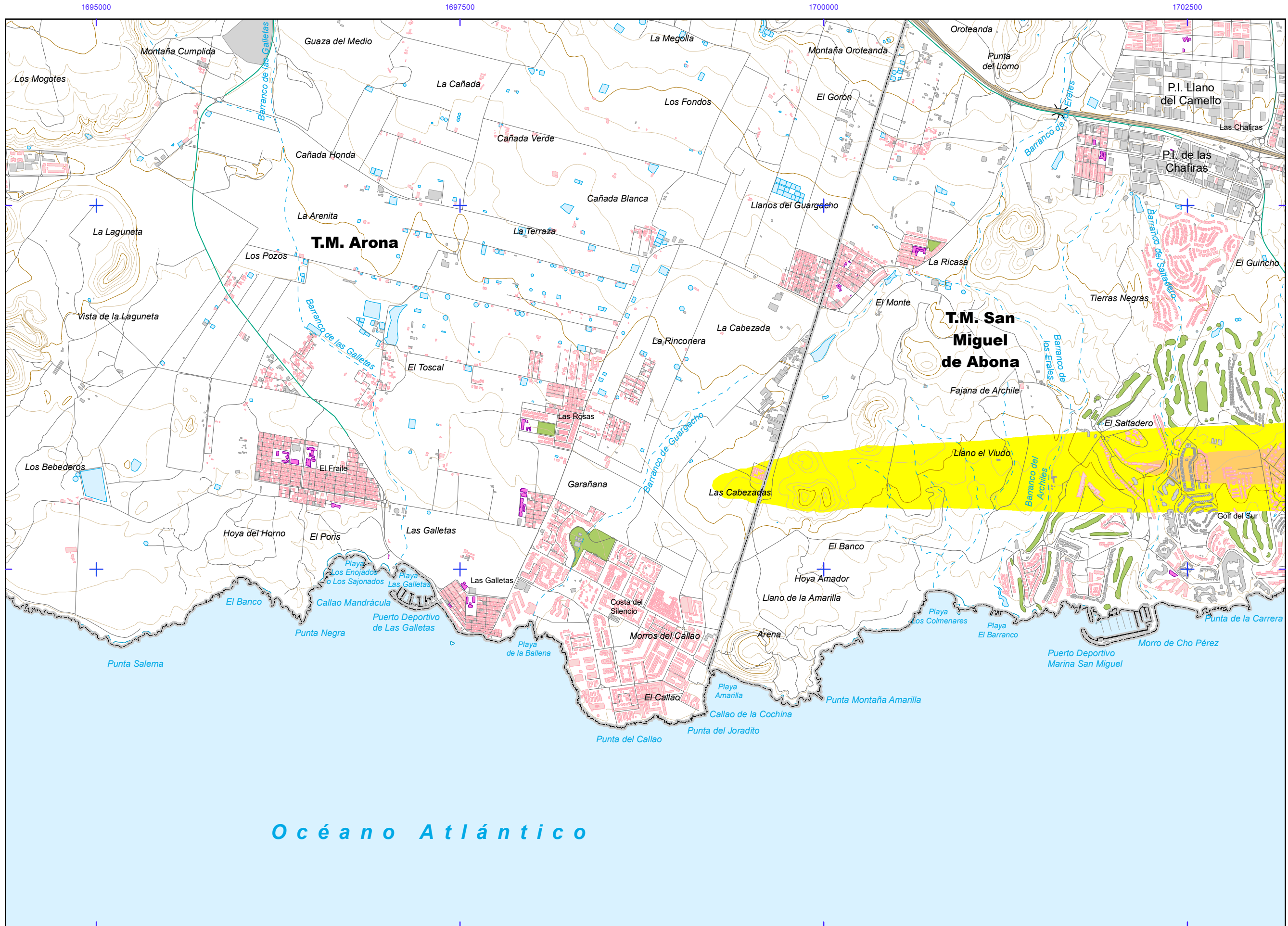


Otros elementos



Elementos cartográficos





AEROPUERTO DE TENERIFE-SUR

L_{den}

Nivel sonoro (dB (A))

55-60	70-75
60-65	>75
65-70	

Tipos de edificio

[Pink square]	Uso residencial
[Purple square]	Uso sanitario o docente
[Grey square]	Uso industrial o comercial

Otros elementos

[Black line]	Infraestructura aeroportuaria
[Dashed line]	Delimitación zona de servicio
[Blue square]	Lagunas, lagos, etc
[Green square]	Zonas Verdes
[White square]	Depósitos
[Blue lines]	Salinas
[Green lines]	Marismas

Elementos cartográficos

[Grey line]	Límite municipio
[Thick black line]	Autopistas y autovías
[Green line]	Carreteras nacionales y autonómicas
[Thin black line]	Carreteras locales y caminos
[Cross symbol]	FFCC
[Blue line]	Cursos de agua
[Dashed blue line]	Cursos de agua intermitentes
[Orange line]	Curva nivel normal
[Yellow line]	Curva nivel maestra
[Thin black line]	Tuberías
[Thin grey line]	Otros elementos cartográficos

