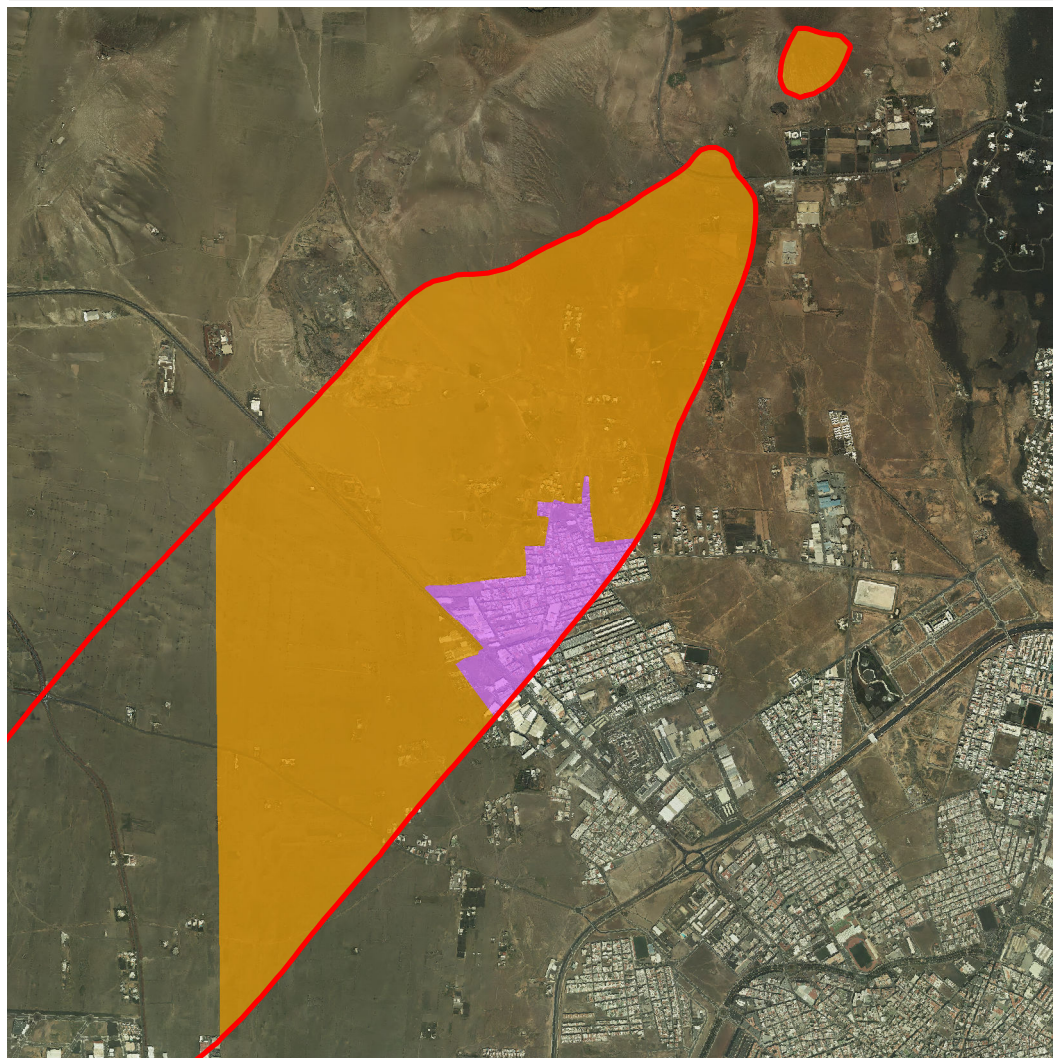


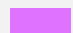
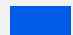



ANEXO III: PLANEAMIENTO TERRITORIAL

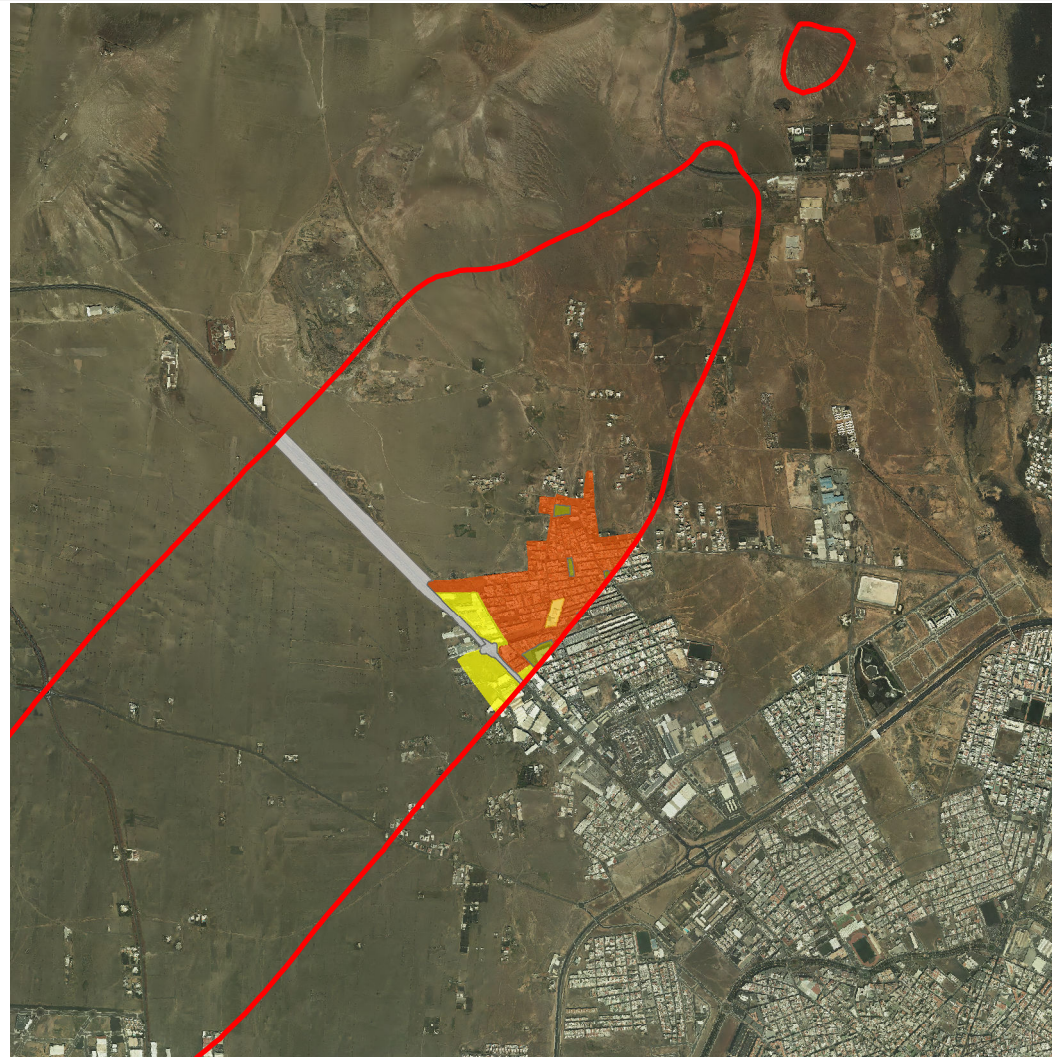
ARRECIFE









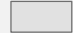


CLASIFICACIÓN



-  SUELO URBANO
-  SUELO URBANIZABLE
-  SUELO RÚSTICO

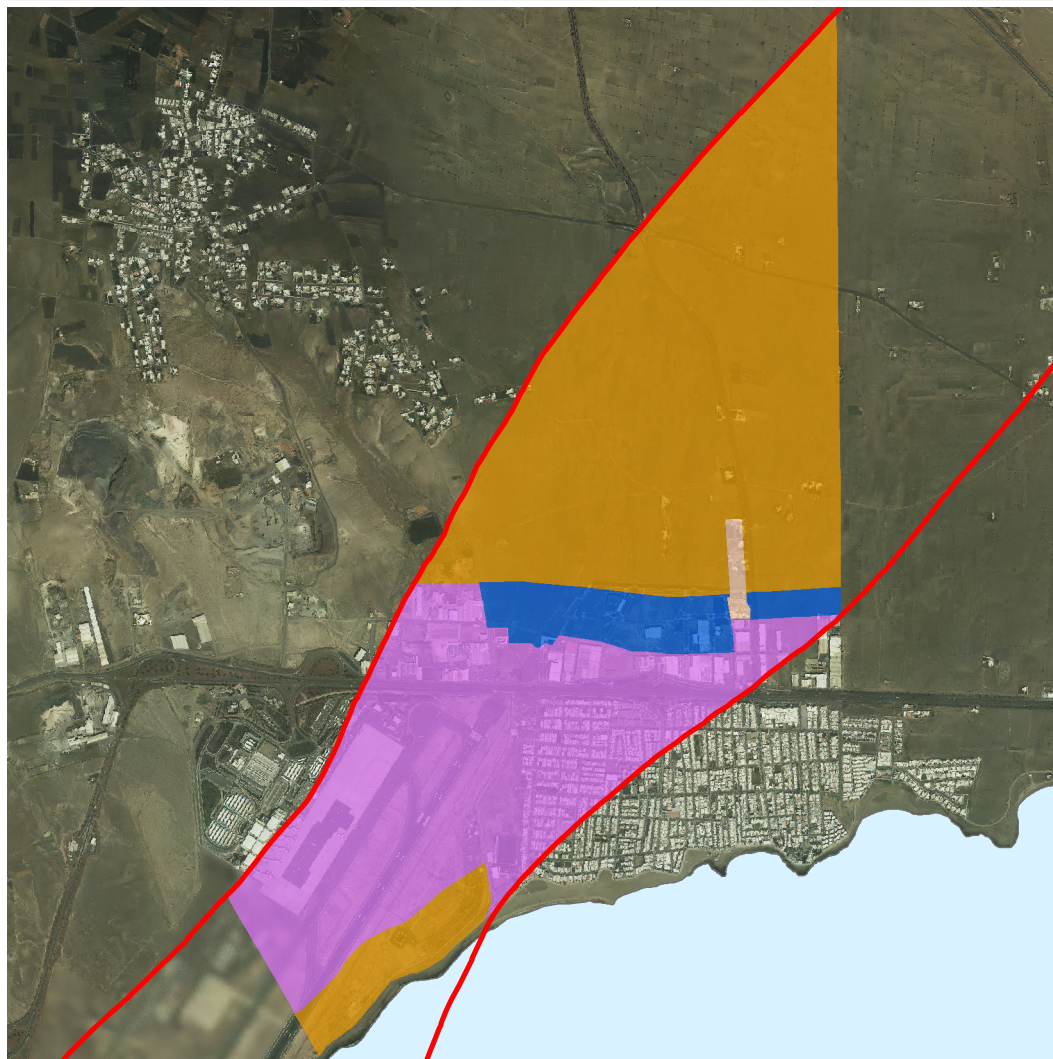
CALIFICACIÓN

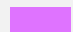




- | | | |
|---|---|--|
|  RESIDENCIAL |  TURÍSTICO |  INFR. AEROPORTUARIA |
|  INDUSTRIAL |  EQ. EDUCATIVO |  AERÓDROMO MILITAR |
|  TERCIARIO |  EQ. DEPORTIVO |  OTRAS INFRAESTRUCTURAS |
|  ESPACIOS LIBRES |  OTROS EQ. | |

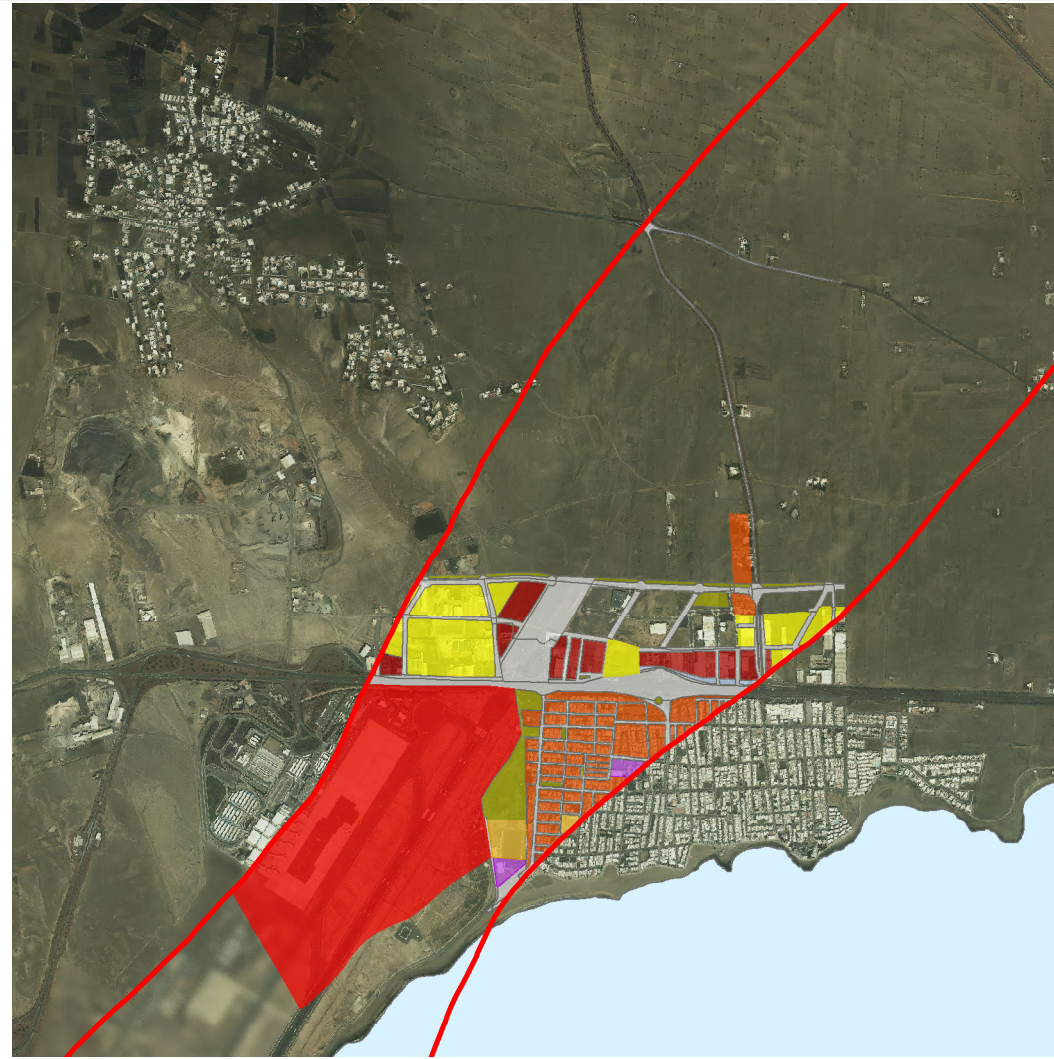
SAN BARTOLOMÉ












CLASIFICACIÓN



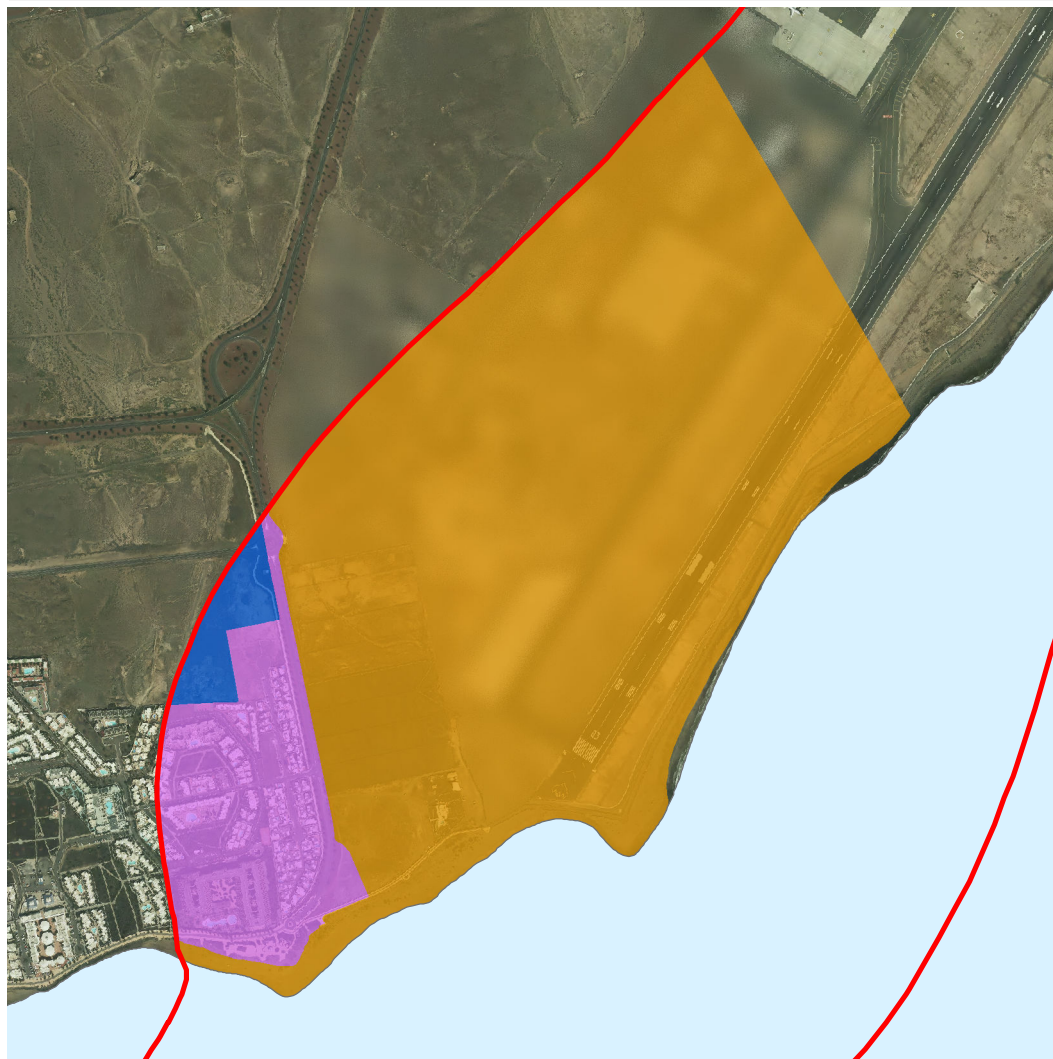
-  SUELO URBANO
-  SUELO URBANIZABLE
-  SUELO RÚSTICO

CALIFICACIÓN



- | | | |
|---|---|--|
|  RESIDENCIAL |  TURÍSTICO |  INFR. AEROPORTUARIA |
|  INDUSTRIAL |  EQ. EDUCATIVO |  AERÓDROMO MILITAR |
|  TERCIARIO |  EQ. DEPORTIVO |  OTRAS INFRAESTRUCTURAS |
|  ESPACIOS LIBRES |  OTROS EQ. | |

CLASIFICACIÓN



- SUELO URBANO
- SUELO URBANIZABLE
- SUELO RÚSTICO

CALIFICACIÓN



- | | | |
|---|--|--|
| <ul style="list-style-type: none"> RESIDENCIAL INDUSTRIAL TERCIARIO ESPACIOS LIBRES | <ul style="list-style-type: none"> TURÍSTICO EQ. EDUCATIVO EQ. DEPORTIVO OTROS EQ. | <ul style="list-style-type: none"> INFR. AEROPORTUARIA AERÓDROMO MILITAR OTRAS INFRAESTRUCTURAS |
|---|--|--|